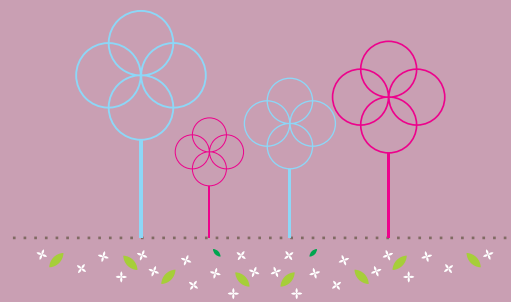


Reelicon Belleza



Large 1 BHK • 2 & 3 BHK Luxurious Homes
Showrooms and Shops
at Bopodi, Pune



Reelicon Belleza Reelicon Builders, a trusted name in Pune's real estate landscape, has been shaping the city's skyline with landmark developments for over three decades. Renowned for their commitment to quality, innovation, and customer satisfaction, Reelicon Builders has consistently delivered thoughtfully designed residential and commercial spaces that cater to modern lifestyles. With a reputation for excellence and a legacy of trust, the company continues to redefine urban living through projects that combine functionality, aesthetics, and sustainability. Continuing this tradition, Reelicon Builders proudly introduces their latest masterpiece, Reelicon Belleza, in the prime locality of Bopodi, Pune. This exclusive residential and commercial project is a seamless blend of luxury, comfort, and convenience, crafted to meet the aspirations of contemporary families. Located in the heart of Bopodi, a two minute walk from Reelicon Belleza offers unmatched connectivity to key areas like Aundh, Khadki, and Pune University, ensuring residents enjoy the perfect balance of work and leisure. Designed with meticulous attention to detail, Reelicon Belleza features elegantly planned homes surrounded by a range of modern amenities, including landscaped gardens, fitness zones, and recreational spaces, making it a haven for a vibrant community. Welcome to Reelicon Belleza—your gateway to a lifestyle of elegance, connectivity, and serenity.



Reelicon Belleza

Elegance Meets Everyday Living...

Welcome to your future home in Bopodi, Pune, where comfort, convenience, and elegance come together to create a truly unique living experience. Nestled in a prime location, this residential and commercial project is thoughtfully designed to offer a harmonious blend of modern amenities and serene surroundings, ensuring a lifestyle that is both vibrant and peaceful. Every detail in these spacious, meticulously planned homes has been crafted to enhance your daily life. From airy living spaces that invite natural light and ventilation to premium finishes that reflect sophistication, these homes are a testament to quality and care. The project also boasts an array of contemporary amenities, including a roof top fitness center, yoga deck, landscaped gardens,

catering to the needs of every family member. Strategically situated in Bopodi, the project provides seamless connectivity to Bopodi Metro Station and Pune International Airport and key areas such as Pune University, Aundh, Khadki ensuring your commute is always stress-free. With renowned educational, healthcare, and shopping hubs close by, you'll find everything you need within easy reach. Step into a community where every moment feels special, from tranquil evenings spent on your private balcony to engaging weekends with neighbors in thoughtfully designed common spaces. Your new home in Bopodi, Pune, is more than just a residence—it's a promise of a brighter tomorrow. Make this your address, and elevate your lifestyle to new heights.





Specifications

Structure:

- RCC framed structure, Earthquake resistant design confirming to latest IS code.

Brick work:

- External wall 6" & Internal wall 4" - AAC blocks of good quality.

Plaster:

- Internal gypsum plaster
- External plaster will be sand faced rough cast plaster with 2 coats.

Water storage:

- Underground and overhead water tanks.

Staircase:

- Anti-skid Staircase/s will be provided as per Govt. norms

Lifts:

- Two Automatic lifts of make OTIS/ KONE/equivalent make.

Firefighting:

- Firefighting provision will be made as per Govt. norms

Energy conservation:

- Inverter provision for each apartment.

Security:

- CCTV, Video door phone etc.

Flooring and Dado tiles:

- Premium quality Vitrified tiles for all rooms.
- Designer wall tiles in all toilets up to lintel level.
- Anti-skid tiles for flooring in all toilets.

Sanitary Fittings and Fixtures:

- C P fittings and Boiler provision in all toilets.
- European commodes in all toilets.

Plumbing:

- Internal Concealed plumbing with UPVC / PVC / CPVC
- Concealed stop valve for each incoming water line of all Apartments.
- External water line CPVC pipe Astral / Prince Equivalent make.

Kitchen:

- Granite platform in
- SS sink of Nirali / equivalent
- Provision for Aqua guard
- Dry Balcony with provision for washing machine.

Electrical:

- Concealed FRLS multi strand copper wires Finolex / Polycab/equivalent
- Modular switches and sockets.
- ELCB, and separate MCB for each room and each power point (16-amp point)

Door and door frames:

- Decorative granite door frames for all toilets.
- Door frame with door panel for main door.
- Both side main door and internal doors laminate finish.

Windows And Terrace Doors

- 2/3 track powder coated aluminum sliding door for terrace.
- 2/3 track aluminum windows with mosquito nets.
- Window sill for all window bottoms.
- MS safety grills for all windows.

Painting:

- Durable Ace paint for external walls of the building.
- Oil bond paint for internal wall of the unit.

Living Room Balcony:

- Railings design with good quality material.
- Sliding doors for Living Room / Master bedroom Balcony.

Amenities

- **Elegant compound wall**
- **Lush green plantation along the periphery**
- **Grand entrance gate with security cabin**
- **Decorative entrance lobby**
- **Rooftop garden**
- **Fire fighting system**
- **Generator back-up for lifts and common areas**
- **Concrete internal roads**
- **Ample covered car parking**
- **Vermi-culture**
- **Rainwater harvesting**
- **Solar water system**
- **Yoga deck**
- **Open gym**



Reelicon Belleza



2nd to 4th Floor



5th to 13th Floor



TYPICAL 1 BHK AREA STATEMENT

	Carpet	Balcony	Total Carpet
Sq. Ft.	490	49	539
In Sq. M	45.52	4.55	50.07

Reelicon Belleza



1 BHK



Large Size apartment with dining and two toilets

1 BHK Section View



TYPICAL 2 BHK AREA STATEMENT

Reelicon Belleza

	Carpets	Balcony	Total Carpets
Sq. Ft.	627	74	701
In Sq. M	58.29	6.88	65.17



2 BHK



2 BHK Section View



TYPICAL 3 BHK AREA STATEMENT

	Carpets	Balcony	Total Carpets
Sq. Ft.	1091	123	1213
In Sq. M	101.32	11.39	112.70

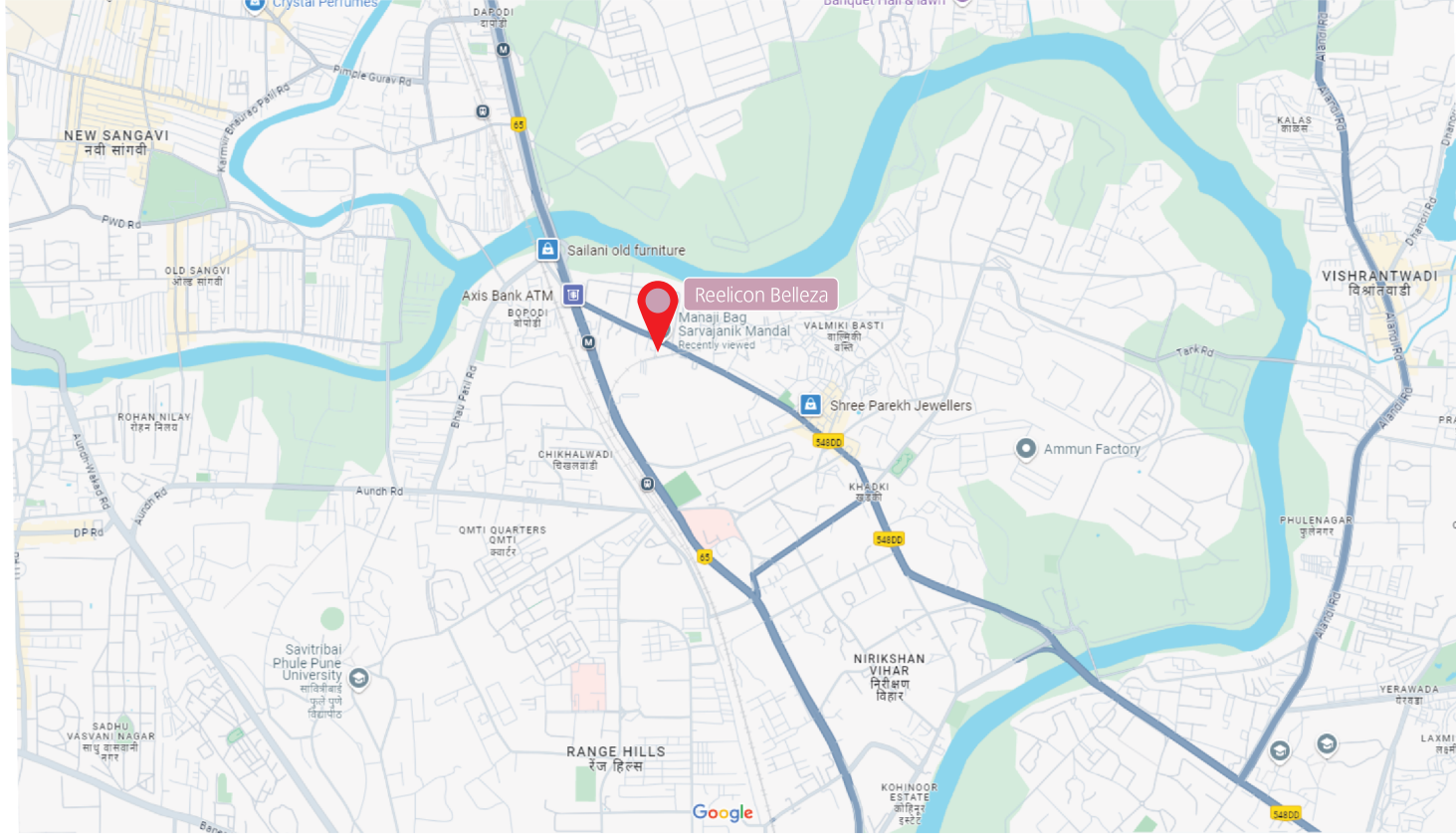
Reelicon Belleza



3 BHK



3 BHK Section View



Site Address:

CTS number- 3082 TO 3088, Manaji Bagh,
Laxmanrao Kirloskar Rd, Bopdi,
Pune, 411003,
Maharashtra, India

Pune International Airport	10 Km
Aundh	5.3Km
Pune Station	8 Km
SP Pune University	2.7 Km
PCMC	8.6 Km
Hinjawadi	13.2 Km



Reg. Office: 301, Westerncourt, Opp. to E-Sqaure Multiplex, 1082, Ganeshkhind road, Shivaji Nagar, Pune - 411016. (MS) India.

Branch Off.: Unit no.5, 2nd Floor, Rachana Trade Estate,
Final Plot No. 84, CTS No. 105, Law College Rd, Erandwane, Pune-411004.

Call Us: +91 8484855153

Email: sales@reeliconbuilders.in

www.reeliconbuilders.in

- Architect: Ankur Associates
- RCC Consultants: G A Bhilare Consultants Private Limited
- Legal Advisor: Adv. Nandkumar Shinde
- Branding: Noworries Ad. Venture

This brochure is an imaginary concept of the proposed project and has no legal binding on the developer. Visual representations drawings in this brochure are artist's impression only and representation of facts. The right to change/amend the plans/specifications/concept without prior notice remains with the developers/competent authorities and shall not form part of the offer or contract. The Sale and Purchase agreement shall form the entire agreement between the purchaser and developer



P52100078121

